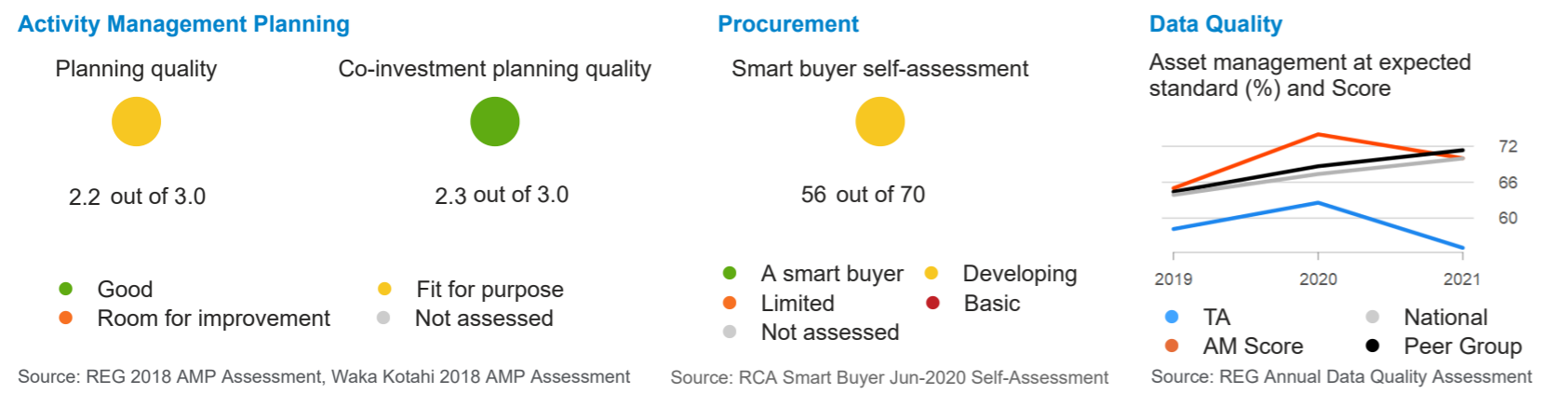


36,500 Population	\$1,077 GDP (\$M)	\$231 Valuation (\$M)	\$11.3 Expenditure (\$M)	\$310 Expenditure per capita	59% FAR
584 Total (km)	532 Sealed (km)	52 Unsealed (km)	406 Rural (km)	178 Urban (km)	56 No. of bridges

Activity Management

Planning, Procurement and Data Quality



Service Performance

LGA Non-Financial Performance Measures

2018-21 LTP Targets Achieved

Annual Targets Achieved	2015-25 Long Term Plan			2018-28 Long Term Plan		
	2015/16	2016/17	2017/18	2018/19	2019/20	2020/21
Provision of roads and footpaths	●	●	●	●	●	●
Road safety	●	●	●	●	●	●
Condition of the sealed road network	●	●	●	●	●	●
Maintenance of the sealed road network	●	●	●	●	●	●
Condition of the footpaths within the local road network	●	●	●	●	●	●
Response to service requests	●	●	●	●	●	●

Source: TA Annual Reports

● Target achieved ● Partially achieved¹ ● Target not achieved ● Not reported

Co-Investor Assurance

Investment Performance

Overall Rating: ●

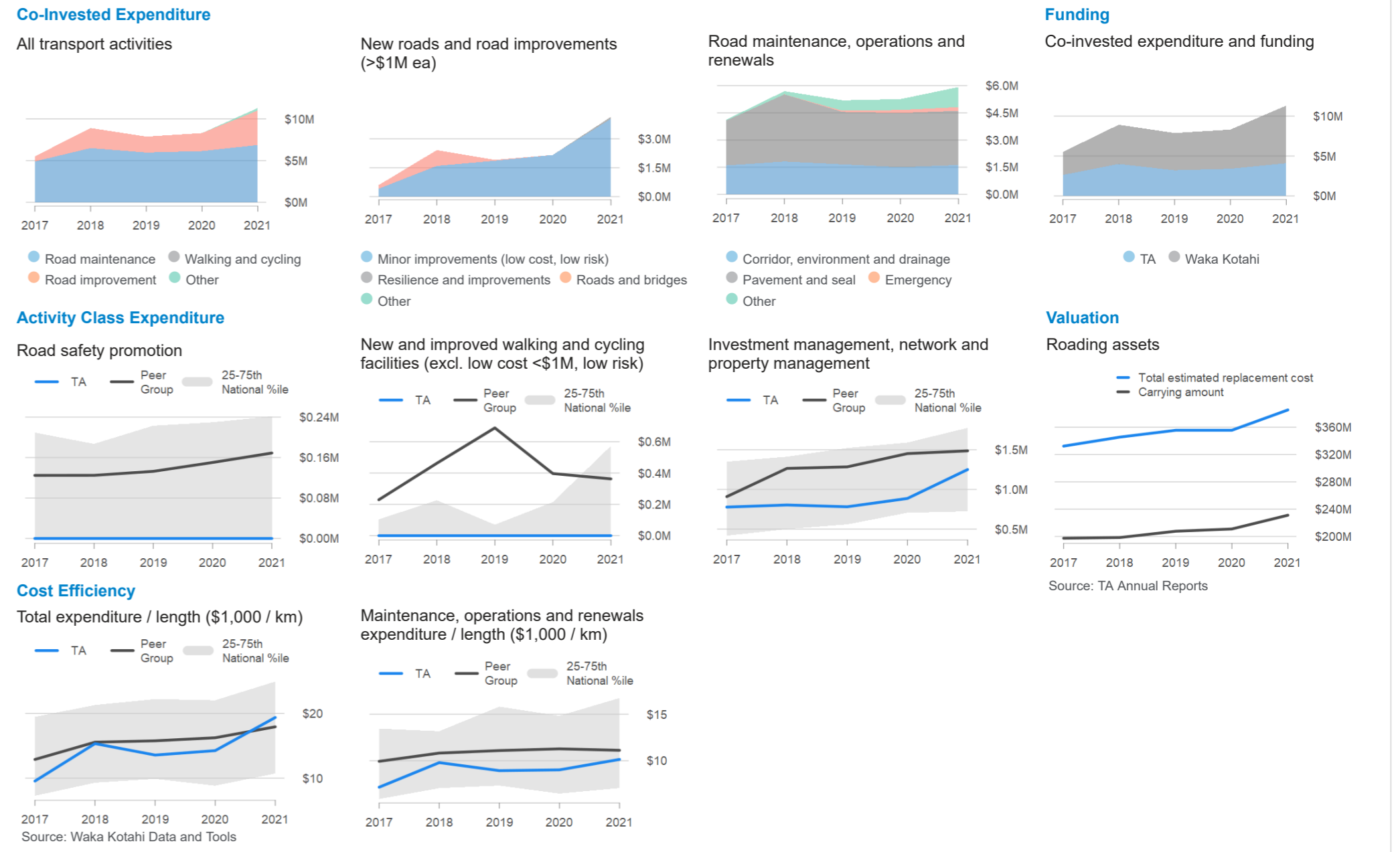
Investment Audit (Four Grades)	Technical Audit (Four Grades)
Contract Management: ●	Activity Management Planning: ●
Financial Management: ●	Data Quality: ●
Procurement: ●	Network Condition and Management: ●
Professional Services: ●	Road Safety: ●
Previous Audit Issues: ●	Previous Audit Issues: ●

Source: Waka Kotahi, Audit and Assurance, Technical & Investment Audit Report Aug-19

Delivery

Expenditure, Funding, Cost Efficiency and Valuation

\$27.5M (100%) Total 2018-21 NLTP Budget (\$M)/ Total Budget Spent (%)



Achievements

Works Completed, Amenity and Road Condition

0.9% Ride Quality (STE)

